

External Triggers for Lumi-Link Command Center Installation & User Guide

The trigger port allows user defined “Scenes” stored in the Lumi-Link Command Center to be triggered On or Off from an external momentary switch or RS-232 command*. Triggers will work independently to the connected MFD or Smart device. Scenes can therefore be triggered when the MFD or smart device is turned on or off.

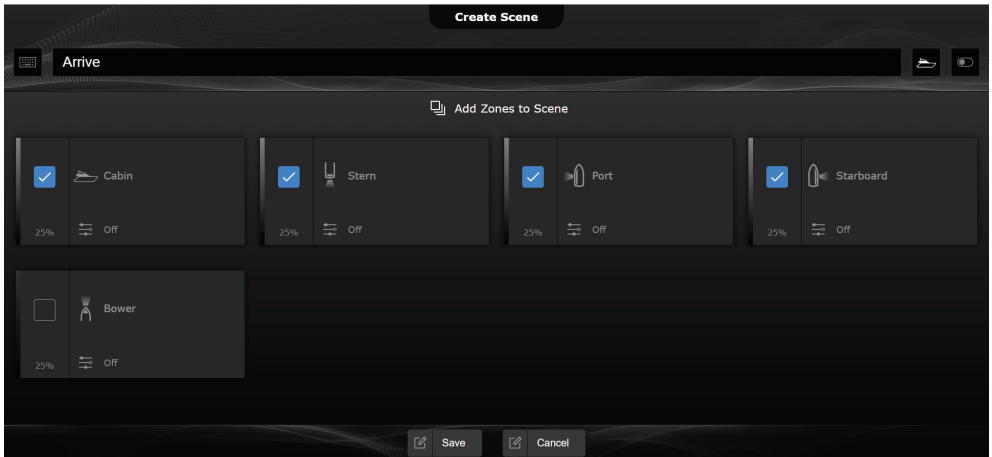
*with addition of external RS-232 Trigger module PN: 60-0411

An example “trigger” may be to turn a scene on called “ALL Lights On” using an external switch when you first arrive at the vessel.

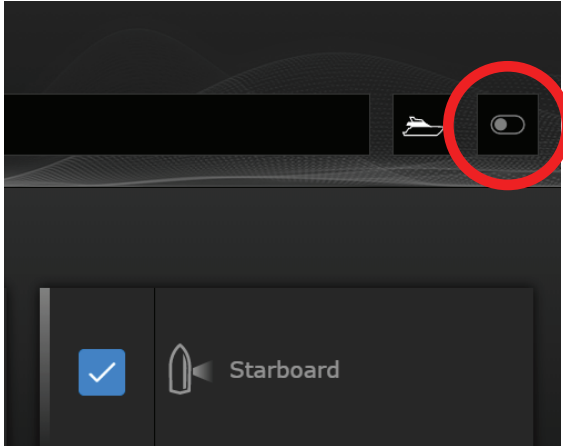
Creating a scene and allocating a Trigger port number:

When a Scene is created or edited it can be allocated a “Trigger port Number”

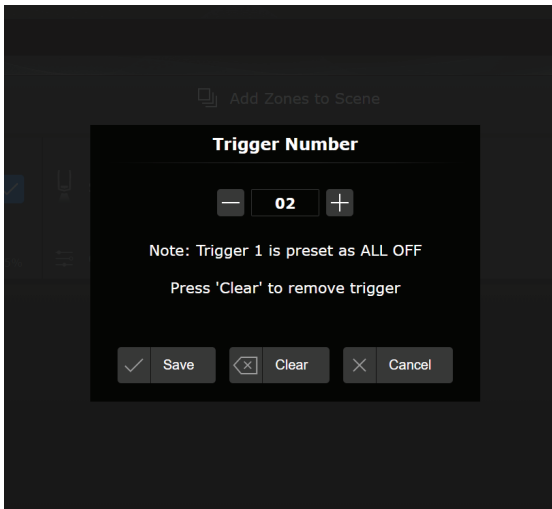
Create/Edit the scene...



Select the trigger port icon (top right corner)...



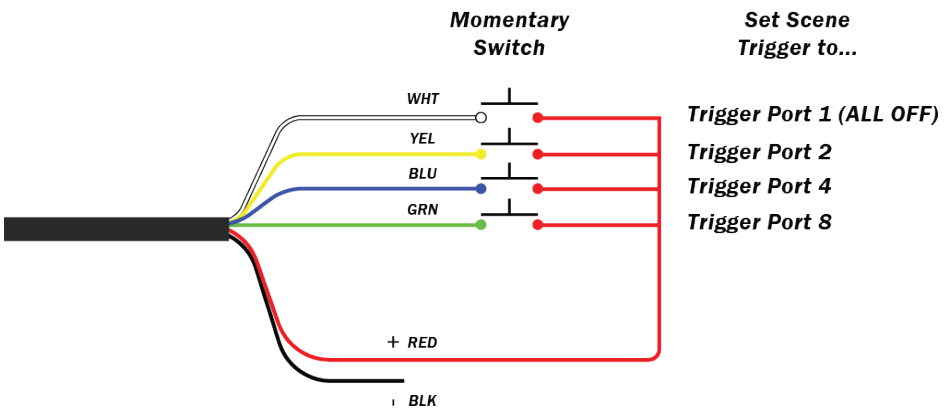
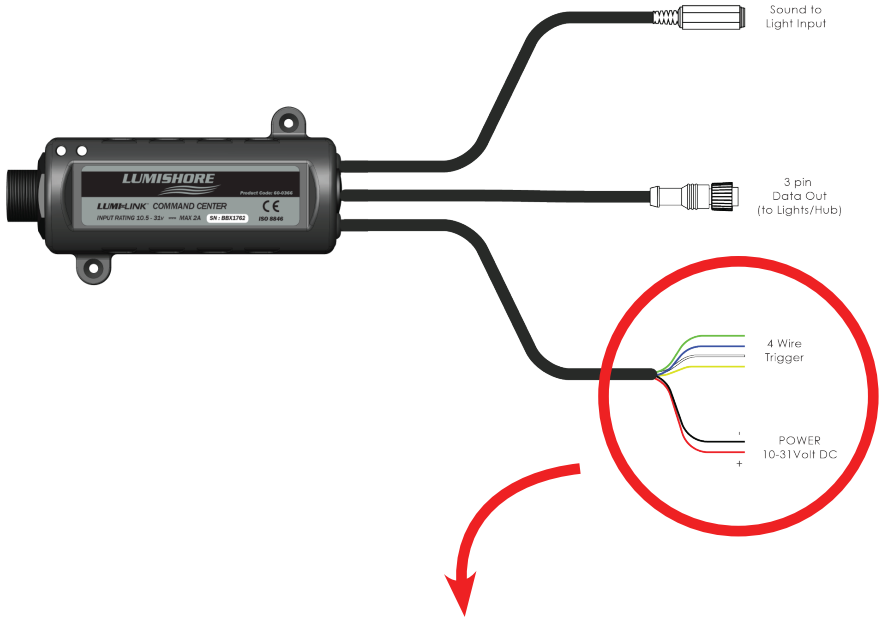
Select a trigger port number for this scene...



Press Save...

Connecting Up to 4 Triggers using Momentary switches

The Lumi-Link command center has 4 Trigger wires. These can be connected directly to a **momentary** switch as shown in the following diagram. Note – only **momentary action** switch to be used. **Apply +3 to +24volt to the corresponding trigger wire.**



Connecting up to 15 Triggers using Digital Switching

The 4 trigger wires can also be wired in binary format in conjunction with a digital switch, this extends the switch input to a maximum of 15 triggers.

The Yellow, blue, green and white wires can be connected to separate outputs of the digital switch and turned on independently or in combinations with each other by following the Binary table below.

Trigger No	Green	Blue	Yellow	White
N/A	0	0	0	0
1 (All Off)	0	0	0	1
2	0	0	1	0
3	0	0	1	1
4	0	1	0	0
5	0	1	0	1
6	0	1	1	0
7	0	1	1	1
8	1	0	0	0
9	1	0	0	1
10	1	0	1	0
11	1	0	1	1
12	1	1	0	0
13	1	1	0	1
14	1	1	1	0
15	1	1	1	1

For example;

To select trigger port 2 connect only the yellow wire to +Ve.

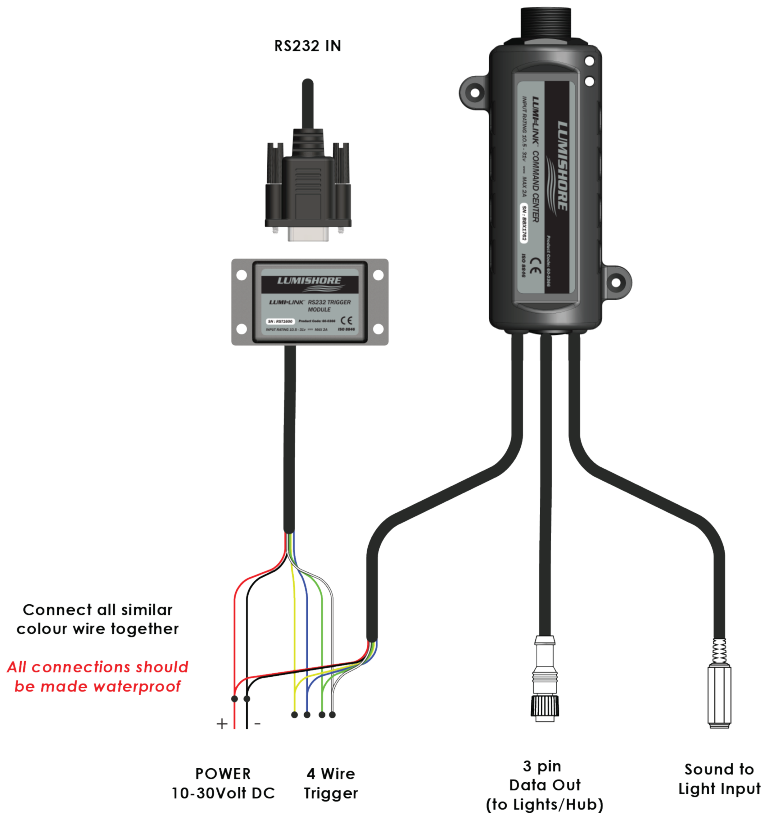
To select trigger port 3 connect the yellow and white wire to +Ve.

To select trigger port 15 connect green, blue, yellow and white to +Ve.

RS232 via external module PN: 60-0411

Scenes can also be triggered using an RS-232 command sent to the Lumi-Link command center via an external RS232 Module.

The RS232 Module wires directly to the Lumi-Link Command Center via the power and trigger port connections. Connect each colour wire together and ensure all connections are isolated from each other. If the device is installed in a wet area ensure all connections are made waterproof.



Settings: Baud Rate:38400, 8 Bits No Parity Check, 2 Stop Bits

Format: send "T" followed by trigger number

Example command: for trigger port 12 send T12

LUMISHORE

