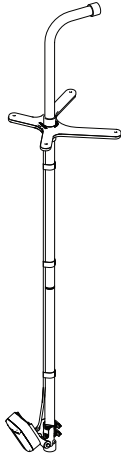


# LOWRANCE

# SIMRAD

## LiveSight Ice transducer Installation Guide



## Compliance statements

### Europe

Navico declares under our sole responsibility that the product conforms with the requirements of:

- CE under EMC Directive 2014/30/EU

The relevant Declaration of Conformity is available on the following websites:

- [www.lowrance.com](http://www.lowrance.com)
- [www.simrad-yachting.com](http://www.simrad-yachting.com)

### United States of America

→ **Note:** The user is cautioned that any changes or modifications not expressly approved by the party responsible for compliance could void the user's authority to operate the equipment

### Australia and New Zealand

Navico declares under our sole responsibility that the product conforms with the requirements of:

- level 2 devices of the Radiocommunications (Electromagnetic Compatibility) standard 2017

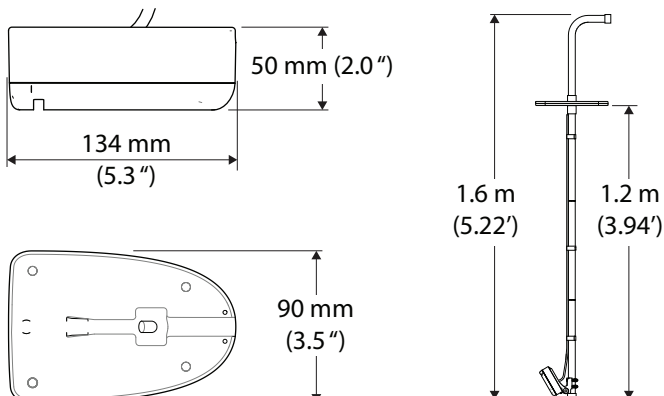
The relevant Declaration of Conformity is available on the following websites:

- [www.lowrance.com](http://www.lowrance.com)
- [www.simrad-yachting.com](http://www.simrad-yachting.com)

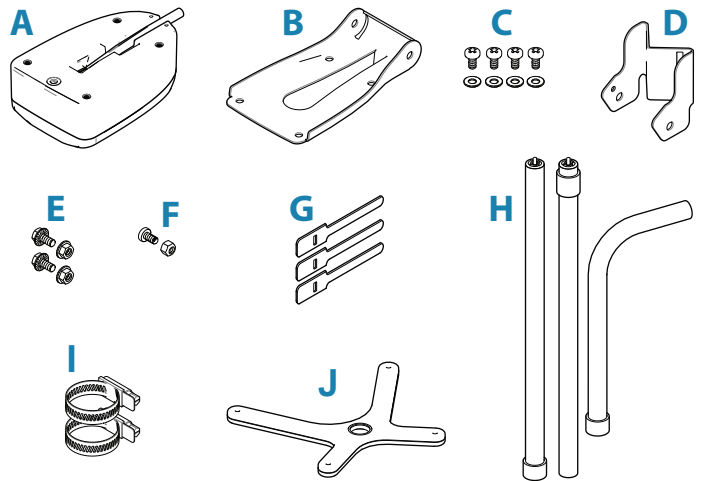
## Technical specifications

Environmental	
Water temperature	0°C to +35°C (+32°F to +95°F)
Storage temperature	-30°C to +70°C (-22°F to +158°F)
Physical	
Weight (without cable)	0,614 kg (1.354 lbs.)
Cable length	7,6 m (25 ft)

## Dimensions

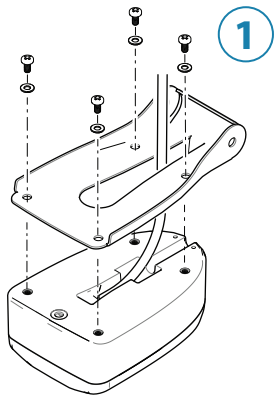


## Parts included

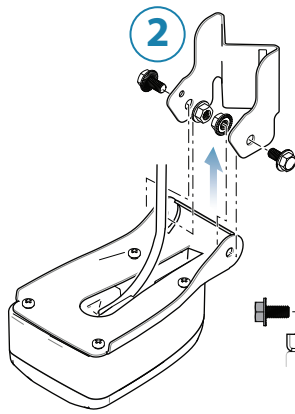


- A.** LiveSight transducer, incl. 7,6 m (25 ft) cable
- B.** Transducer bracket
- C.** Screws M4x8 Ph SS18-8 and washers (x4)
- D.** Pole adapter
- E.** Hex flange bolts M6-1x12, SS18-8, and M6x1 serrated flange nut, 316SS (x2)
- F.** Screw M4x8 Ph SS18-8 and M4 316SS nylock nut
- G.** Cable ties (for transducer cable) (x3)
- H.** Ice pole (upper, middle and lower)
- I.** Clamp hose 20 SS (for ice pole adapter) (x2)
- J.** Base plate, ice pole mount

## Assemble transducer and bracket

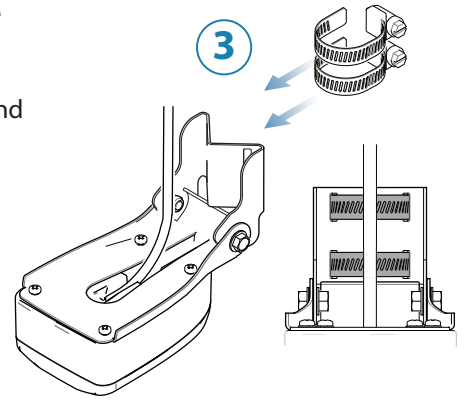


1



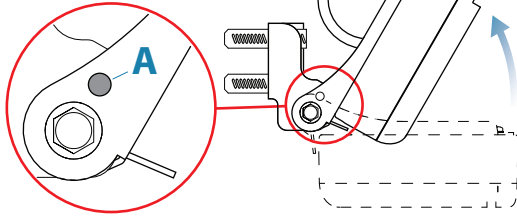
2

Loosely fix the flange nuts and flange bolts to assemble the transducer bracket and the pole adapter

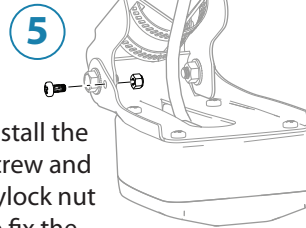


3

Tilt the transducer until the holes (A) on the transducer bracket and on the pole adapter align

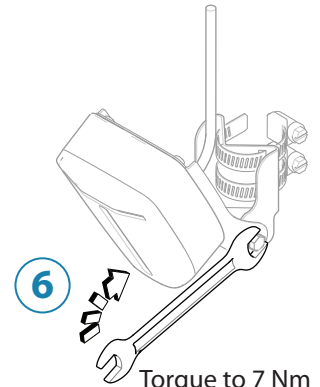


4



5

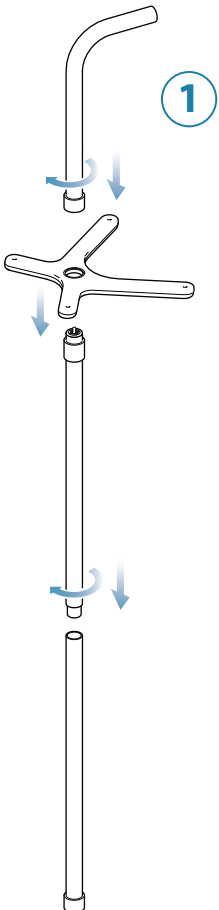
Install the screw and nylock nut to fix the transducer angle



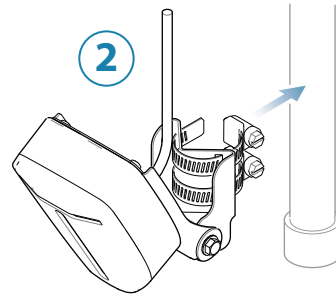
6

Torque to 7 Nm (~15 lbf in).

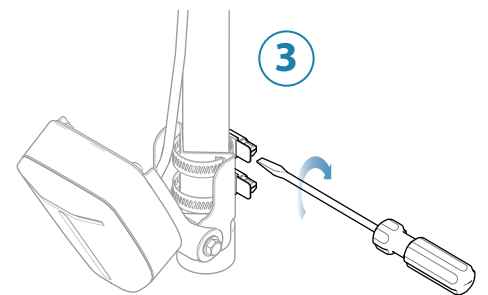
## Assemble all parts



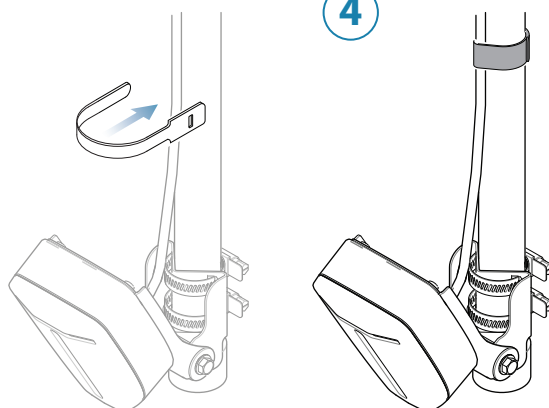
1



2



3



4

