

PRODUCT BASIC INFORMATION

OCEANLINK 7" TFT DISPLAY

Best Performance in Outdoor Environments



OCEANLINK 7" TFT DISPLAY

Precision CAN Instrumentation for Leisure Boats

KEY FEATURES

- ▶ Transmissive layer technology for great readability even in direct sunlight
- ▶ Protection rating IPx7
- ▶ NMEA2000® certified
- ▶ 2 SAE J1939 inputs
- ▶ 13 analog inputs (6x resistive, 2x frequency, 2x 4-20mA, 3x 0-5V,
- ▶ 2 EasyLink data outputs

The OceanLink capacitive multi-touch TFT display is available in 7" display size. The full 24 bit / 16 mio. color optically bonded display features transmissive layer technology for unprecedented and unsurpassed readability even in direct sunlight. For simple installation in any yacht, up to 5 displays can be installed per NMEA2000.

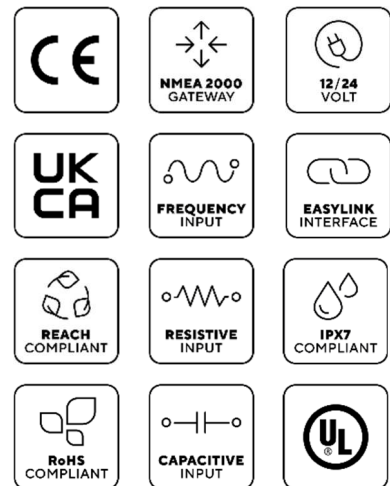
OceanLink 7" TFT display has an embedded gateway for dual analogue engine input and for dual SAEJ1939 engines. All the information received via NMEA2000® and/or via SAE J1939 are redirected, using standard PGNs, to the NMEA2000 network, so that any 3rd party devices, can show them as well. The OceanLink 7" TFT can show data with 2 different layouts (digital and graphic) in blue and amber color. The embedded light sensor can adjust the brightness automatically so that the user could have the best visibility all day long (night mode is only a customer selection).

All its analogue inputs are selectable from a clear list of possible sensors. OceanLink 7" TFT using its smart software routine is able to load a predefined curve calibration, just selecting either the sensor type or the sensor range so that the customer is not obliged to calibrate them. Custom calibration (when needed) is available for fluid level sensor and is also possible to define damping and offset for navigation sensor (e.g., NavSensor, Wind Sensor, etc.). The display also has an alarm input. This input can be customized using the Veratron Configurator Tool.



TECHNICAL DATA

Housing	Case: Aluminum, Bezel: PC-FR
Start-Up Time	5 sec / 3sec (warm start)
Display	7", full 24bit, TFT, touchscreen Resolution: 800x480
Operating Temperature	-25°C to 70°C
Storage Temperature	-40°C to 85°C
Operating Voltage	9 to 32 VDC
Current Consumption	< 1A @ 12V
Protection Class	IPx7
Flammability	UL-94V0
EMC	IEC 60945:2002 / ISO7637-2
Reverse Polarity Protection	Yes (1minute)
Approval	CE, UKCA, RoHS, NMEA2000® CAN (NMEA2000,SAE J1939)
Data Input	Analog (Frequency, Resistive, Voltage, Current 4-20mA, Alarm input)
Data Output	EasyLink, NMEA2000, Alarm output



CONNECTORS

Molex MX150 – Engine1 Connector

Pin	Wire Color	Signal
1	Red	Power (12V/24V)
2	Black	Ground
3	White	Alarm output
4	Green	Frequency sensor input
5	Blue	SAE J1939 - CAN low
6	Blue/White	SAE J1939 - CAN high
7	Yellow	Ignition
8	Gray	Resistive sensor input
9	Brown	Resistive sensor input
10	Orange	0-5V sensor input
11	Light Blue	4-20mA sensor input
12	Yellow	4-20mA sensor input

Molex MX150 – Engine2 Connector

Pin	Wire Color	Signal
1	Red	Alarm input (0-5V)
2	Black	Ground
3	White	Alarm output
4	Green	Frequency sensor input
5	Blue	SAE J1939 - CAN low
6	Blue/White	SAE J1939 - CAN high
7	Yellow	0-5V sensor input
8	Gray	Resistive sensor input
9	Brown	Resistive sensor input
10	Orange	0-5V sensor input
11	Light Blue	Resistive sensor input
12	Yellow	Resistive sensor input

M12-5Pin

Pin	Signal
1	Shield
2	Power (12V)
3	GND
4	CAN high
5	CAN low

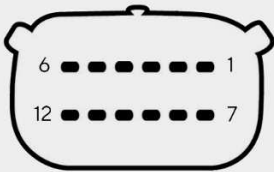
M12-4Pin

Pin	Signal
1	Video Input 2
2	Video Input 1
3	GND
4	GND

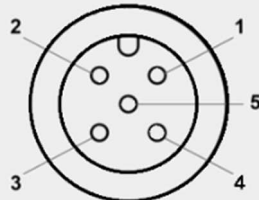
AMP Superseal

Pin	Signal
1	EasyLink - Power
2	EasyLink - GND
3	EasyLink - Data

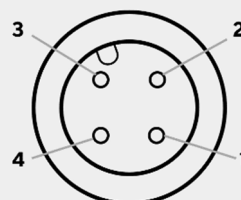
Molex MX 150



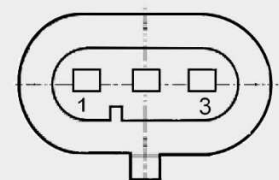
M12-5Pin



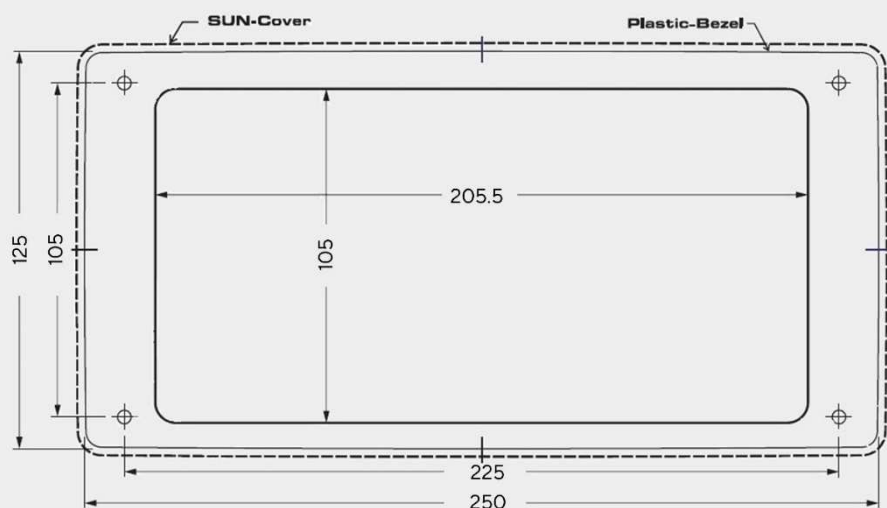
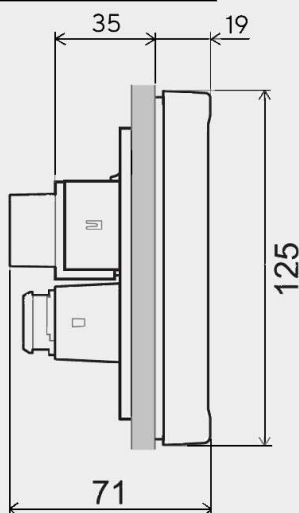
M12-4 Pin



AMP Superseal



DIMENSIONS



ACCESSORIES

Description

Power and data cable – Engine 1

Data cable – Engine 2

EasyLink extension cable

Video input cable 0.3m

Plastic frame – black

Plastic frame – white

Sun cover

NMEA 2000 power cable

NMEA 2000 T-splitter

NMEA 2000 drop cable – 0.5m

NMEA 2000 drop cable – 2m

NMEA 2000 drop cable – 6m

NMEA 2000 terminator – Male

NMEA 2000 terminator – Female

Part Number

A2C1507870001

A2C1992110001

A2C59500139

A2C1845710001

A2C1697530001

A2C1697540001

A2C59501973

A2C3931290001

A2C3931270002

A2C9624370001

A2C9624380001

A2C9624400001

A2C3931100001

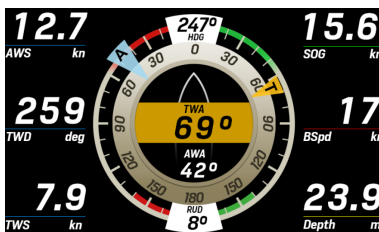
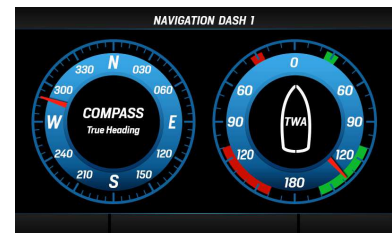
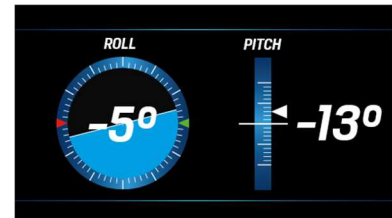
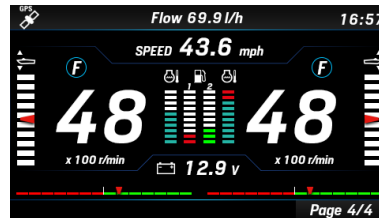
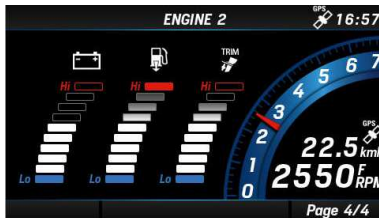
A2C3931060001



**Analog to
NMEA gateway
included.**



SCREENS



**Plug-and-Play
Serial connection**



OCEANLINK 52MM SATELLITES

- OceanLink look-and-feel
- Analog round instrument style
- Digital EasyLink interface
- Up to 2x 16 satellites on one 7" TFT
- Trim, Rudder, Voltmeter, Ammeter, Fuel-, Freshwater- and Wastewater level, Pyrometer, Gear and Engine Oil Pressure and Temperature, Coolant temperature, Boost

OUTDOOR INSTRUMENTATION ENGINEERED IN SWITZERLAND

Veratron AG / Industriestrasse 18 / 9464 Rüthi / Switzerland
T +41 71 7679 111 / info@veratron.com / veratron.com

The information provided in this brochure contains only general descriptions or performance characteristics, which do not always apply as described in case of actual use or which may change as a result of further development of the products. This information is merely a technical description of the product. It is not meant or intended to be a special guarantee for a particular quality or particular durability. An obligation to provide the respective characteristics shall only exist if expressly agreed in the terms of contract. We reserve the right to make changes in availability as well as technical changes without prior notice.
Veratron AG / English © 2024